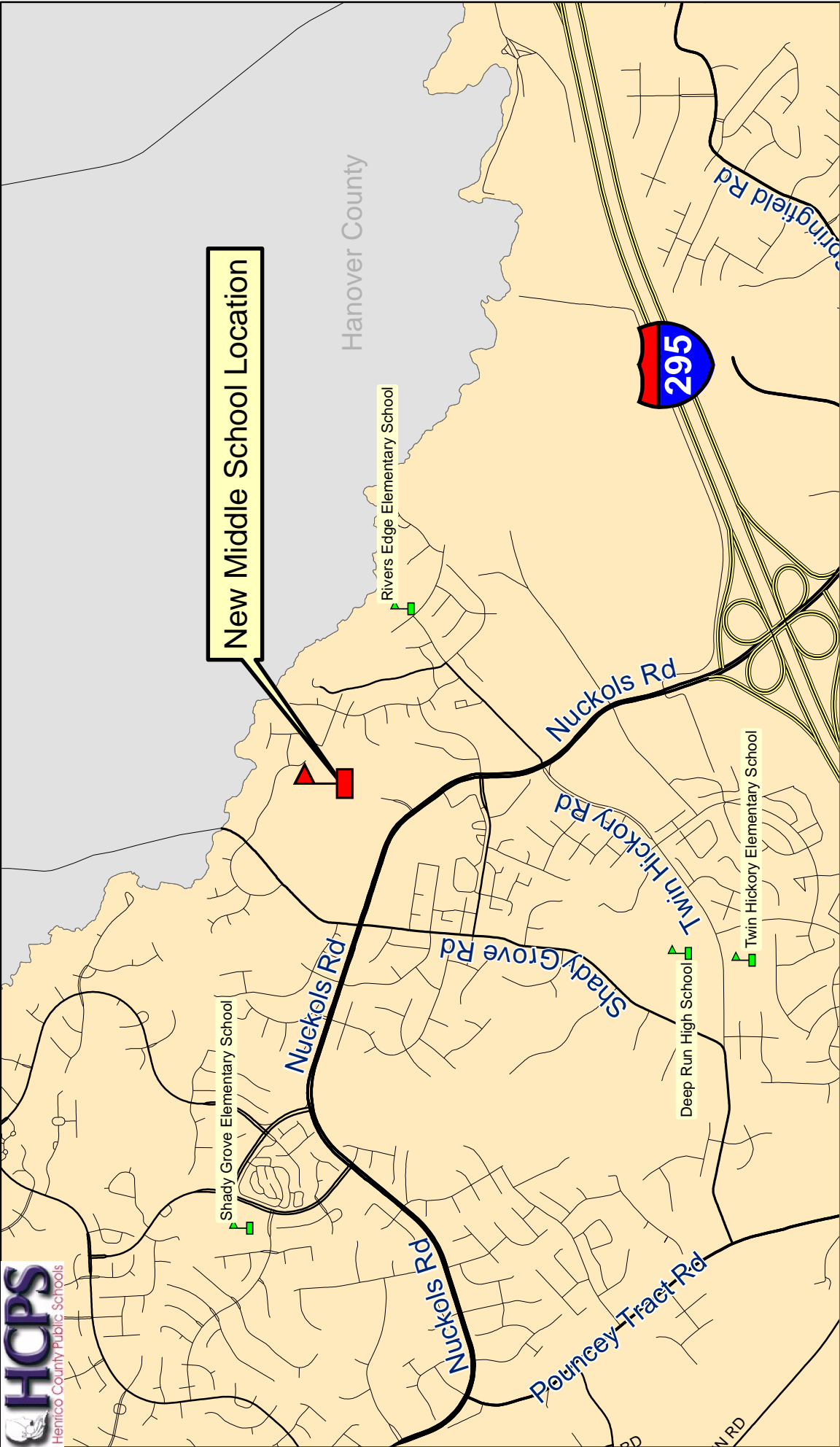
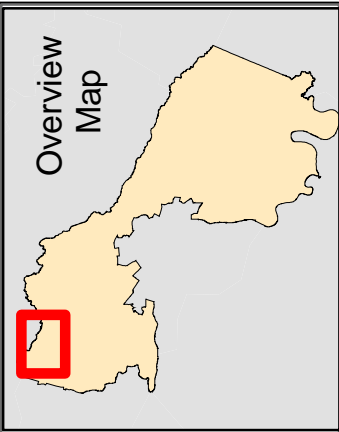




**Appendix F: Miscellaneous Data and Maps**



**New Middle School Location**

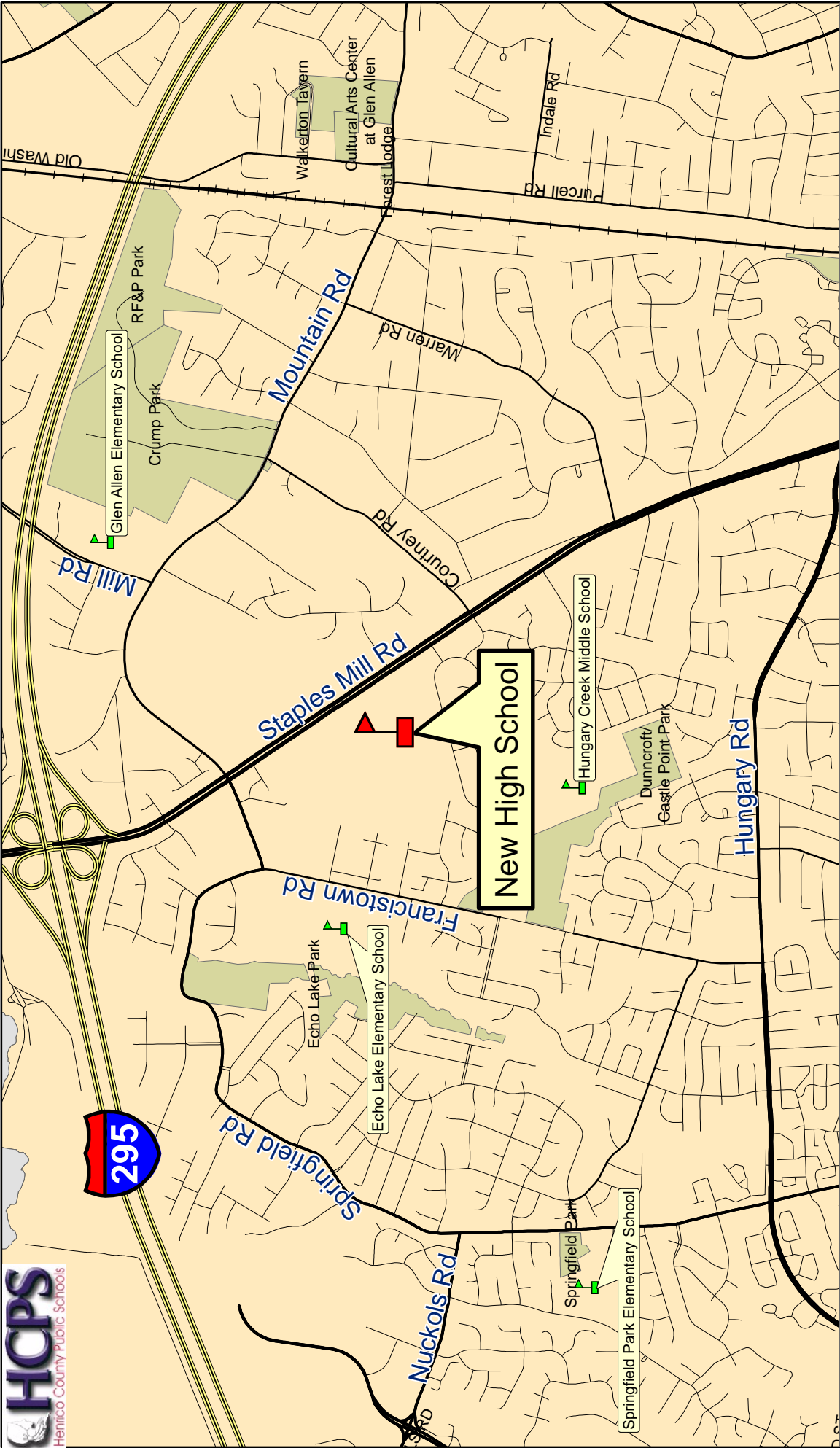


**New Henrico County Middle School Location- Scheduled opening Fall 2010**




-  New Middle School Location
-  Existing School Locations



This map has been produced by Henrico County Public Schools Research and Planning Department. This map is to be used for reference purposes only.  
Map Created: April 2008

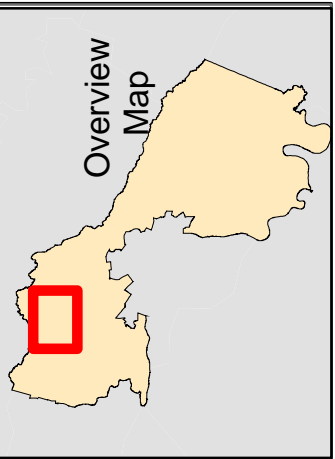


## New Henrico County High School Location- Scheduled opening Fall 2010

-  New High School Location
-  Existing School Locations
-  Henrico County Parks



This map has been produced by Henrico County Public Schools Research and Planning Department. This map is to be used for reference purposes only.  
Map Created: March 2008 by WJR



## High School Redistricting

Henrico County Public Schools is continuing to experience an annual increase in membership. Although development has slowed, several large developments are planned or underway and development will continue throughout the county. Larger cohorts of students at the elementary level will begin to impact middle schools in two years and high school in five years.

Based upon current students in the county, five high schools are projected to be at or over capacity in fall 2008.

School	Fall 2007	Fall 2008	Capacity
Deep Run	1844	1930	1850
Freeman	1597	1626	1760
Godwin	1836	1774	1904
Henrico	1855	1908	1740
Hermitage	2015	2029	1976
Highland Springs	1772	1768	1788
Tucker	1659	1650	1958
Varina	1973	2011	1902

A high school will open in fall 2010 to primarily relieve Hermitage, Henrico, and Deep Run High Schools. To accomplish this, it is anticipated that multiple attendance zones will need to be adjusted.

## Redistricting Framework

The School Board recently approved a redistricting framework for modifying high school attendance boundaries, middle school boundaries, and making need adjustments to feeder patterns. The framework creates a structure for the process but provides flexibility to meet the needs of the county.

- A professional consultant will be hired through a Request for Proposal (RFP) process. The consultant will manage the process, provide updates/information to the School Board, develop and implement a communication plan.
- A 70 member community committee will be selected through an application process. Membership will include three representatives from each high school, two representatives from each middle school, and eight representatives from each of three elementary zones (each zone including 14-15 elementary schools). The committee will be divided into three subcommittees to
  - Develop high school redistricting proposals
  - Develop middle school redistricting proposals
  - Develop proposals for the modification of feeder patterns
 Each subcommittee will include 23-24 members.
- The redistricting work is anticipated to be complete by late spring 2009 to support instructional planning for the changes to take effect in fall 2010.

**Appendix G: Technical Targets and  
Student Yield Information**



**Cropper GIS Consulting, LLC**  
Matthew Cropper, GISP, President  
4900 Reed Road, Suite 110  
Columbus, OH 43220  
Tel: 614.451.1242  
Fax: 614.573.7174  
Email: [mcropper@croppergis.com](mailto:mcropper@croppergis.com)  
Web: [www.croppergis.com](http://www.croppergis.com)