

# Henrico County Public Schools

## Redistricting Project for 2010 Redistricting Meeting January 20-22, 2009



## **TONIGHT'S MISSION: TO CHOOSE 2 OPTIONS**

### *Tonight's Agenda*

### **Agenda is in 2 parts tonight:**

- |           |   |
|-----------|---|
| 6:00-7:00 | Part I Objectives - Review and discuss community forum summary report and other thoughts related to the community forum |
| 7:00-8:30 | Part II Objectives - Complete ranking table exercise, vote on 2 options, and review results                             |

## Part I Agenda:

- 6:00-6:15 Review meeting objectives, timeline, and redistricting guidelines
- 6:15-6:30 Present community forum summary report to committee and allow time to briefly review.
- 6:30-6:45 Cropper GIS presentation of summary highlights
- 6:45-7:00 Discuss report and other thoughts related to the community forum

## *Meeting Objectives and Overall Timeline*

*January 20-22 Meetings - Narrow focus to 2 Options*

*February 9-12 Meetings - Review optimal pairing of options and make adjustments based on community feedback and feeder patterns.*

*February 23-26 Meetings - Continue options modifications and review logistics for March community forum*

# *Redistricting Procedural Guidelines*

## Redistricting Procedural Guidelines

- Major roads and natural boundaries will be used whenever feasible to define attendance zones.
- All reasonable efforts should be made to ensure contiguous geographic zones which minimize division of clearly identifiable community components (e.g. apartment units, residential subdivisions).



## Redistricting Procedural Guidelines, continued

- All legal and judicial guidelines for the maintenance of a unitary school system will be strictly adhered to.
- Efforts will be made to establish walking schools and reasonable walking zones where feasible.
- Efforts will be made to ensure an efficient system of school bus transportation.



## **Redistricting Procedural Guidelines, continued**

- Provisions should be made to ensure the continuity of a child's K-12 progress. This may be accomplished by offering older students in a school the option to remain at an existing school if parents provide transportation.
- Implementation of a rezoning plan over a span of several years would be preferable if it has the effect of minimizing the need for additional line changes for a community in the near or immediate future. (Possibility of phasing in certain changes to avoid additional changes when new school construction is completed.)

**6:15-6:30**

*Present community forum  
summary report  
and  
give committee 15 minutes to review*

**6:30-6:45**

***Cropper GIS***  
***presentation of summary highlights***  
***contained in report***

## EXCELLENT TURNOUT!

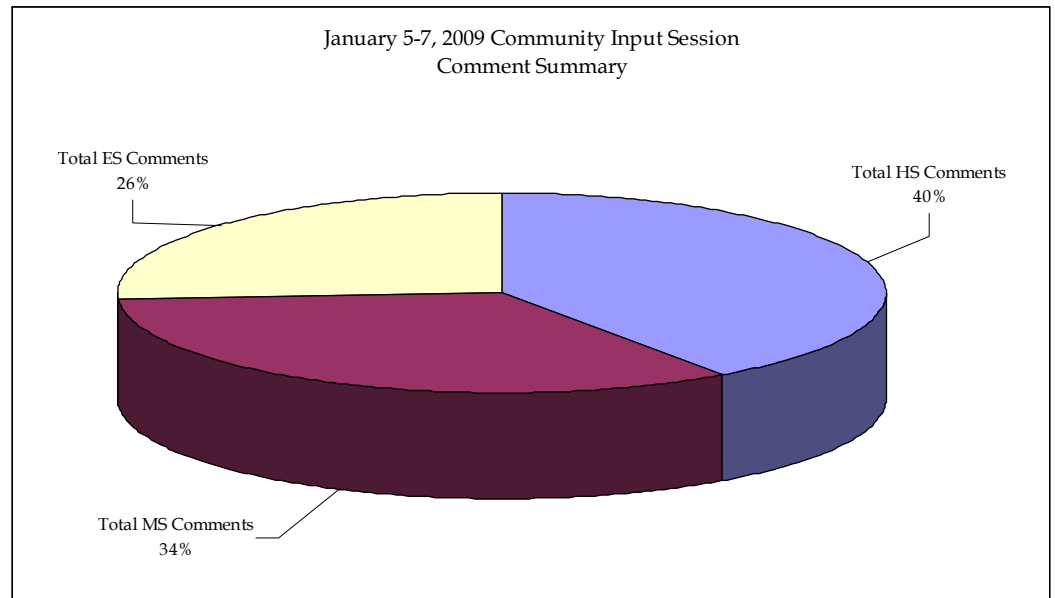
Big Crowds show up to provide feedback:

- Estimated 600-800 on night 1
- 150-200 on night 2
- Over 1,000 on night 3

More than 11,000 total comments received from the forums, emails, faxes, and forms dropped off at HCPS.

Comment Summary

Total HS Comments	4,507
Total MS Comments	3,767
Total ES Comments	2,914
Comments not attributed to level	7
<b>Total</b>	<b>11,195</b>



## **Before we read the results, a few points:**

- The majority of responses that were submitted were in regard to the most suitable option for their particular neighborhood / subdivision.
- The geographical distribution of respondents is uneven (weighted more heavily on the west end), so these summary tables (likes/dislikes) should not be used as the **ONLY** defining factor or indicator over which options are best suited for the entire county.
- The committee needs to maintain focus on building a solution that best meets the redistricting guidelines.

**Overall Results:**

Elementary School Options Comment Summary						
	Option A			Option B		
Prefer	57	9.97%	36.71%	50	9.42%	33.71%
Like	153	26.75%		129	24.29%	
Neutral	43	7.52%	7.52%	37	6.97%	6.97%
DisLike	176	30.77%	55.77%	163	30.70%	59.32%
Oppose	143	25.00%		152	28.63%	
Totals	572	100.00%		531	100.00%	
	Option C			Option D		
Prefer	177	33.59%	72.87%	137	24.42%	54.90%
Like	207	39.28%		171	30.48%	
Neutral	32	6.07%	6.07%	24	4.28%	4.28%
DisLike	75	14.23%	21.06%	100	17.83%	40.82%
Oppose	36	6.83%		129	22.99%	
Totals	527	100.00%		561	100.00%	

- Elementary Option C received the most positive comments, and Option B received the most negative comments.

## Overall Results:

Summary Report Highlights

Middle School Options Comment Summary									
	Option A			Option B			Option C		
Prefer	156	23.04%	65.14%	55	8.90%	35.76%	74	12.63%	57.68%
Like	285	42.10%		166	26.86%		264	45.05%	
Neutral	46	6.79%	6.79%	43	6.96%	6.96%	41	7.00%	7.00%
Dislike	110	16.25%	28.06%	227	36.73%	57.28%	124	21.16%	35.32%
Oppose	80	11.82%		127	20.55%		83	14.16%	
Totals	677	100.00%		618	100.00%		586	100.00%	
	Option D			Option E					
Prefer	103	16.67%	55.66%	46	8.55%	50.93%			
Like	241	39.00%		228	42.38%				
Neutral	32	5.18%	5.18%	43	7.99%	7.99%			
Dislike	157	25.40%	39.16%	142	26.39%	41.08%			
Oppose	85	13.75%		79	14.68%				
Totals	618	100.00%		538	100.00%				

- Middle School Option A received the most positive comments, and Option B received the most negative comments.

**Overall Results:**

High School Options Comment Summary									
	Option A			Option C			Option D		
Prefer	182	16.16%	44.58%	149	14.29%	34.32%	226	22.40%	52.82%
Like	320	28.42%		209	20.04%		307	30.43%	
Neutral	50	4.44%	4.44%	40	3.84%	3.84%	45	4.46%	4.46%
Dislike	362	32.15%	50.98%	355	34.04%	61.84%	258	25.57%	42.72%
Oppose	212	18.83%		290	27.80%		173	17.15%	
Totals	1126	100.00%		1043	100.00%		1009	100.00%	

- High School Option D received the most positive comments, and Option C received the most negative comments.

## **Analysis of comments based on subdivisions:**

- Each respondent stated their subdivision on the forms
- The comments were organized by subdivision to help pinpoint where various concerns are
- Comments that expressed a dislike or opposition to the option were organized into common themes. These were:
  - Neighborhood Disruption Concerns (includes comments regarding split of subdivisions, cohesive communities, and disruptions as a result of adjustments)
  - Proximity and Transportation Concerns (includes comments regarding safety concerns)
  - Comments specifically identifying subdivision splits (not including large community splits)

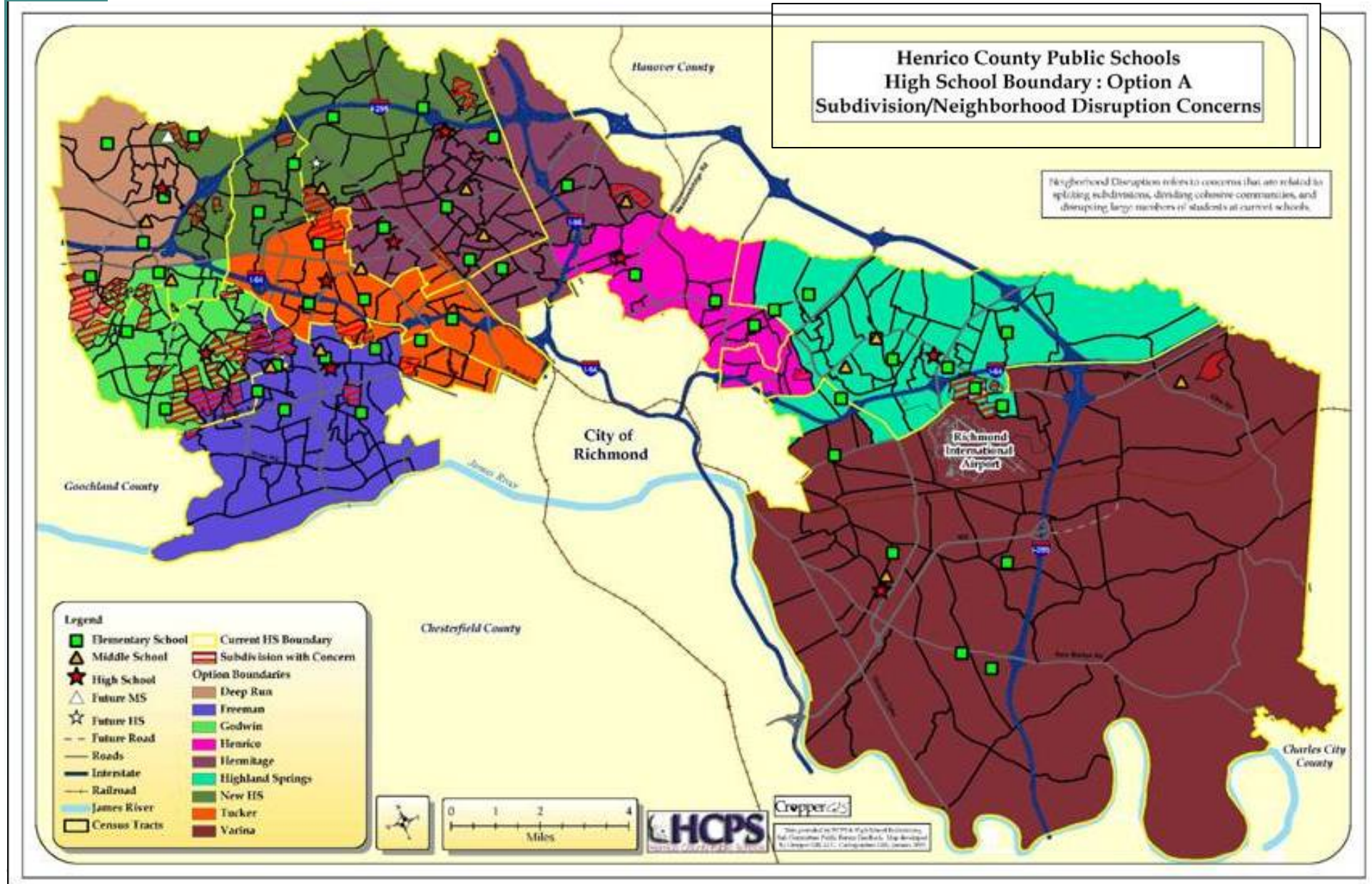
**Analysis of comments based on subdivisions:**

- Neighborhood was included in analysis regardless of size
- Normalizes data and allows committee to not be influenced by size of respondents from any particular area
- Ensures that all concerns are paid attention to

*Neighborhoods / Subdivisions  
with  
Neighborhood Disruption Concerns*

# High Schools page. 19

Neighborhood/Subdivisions with Neighborhood Disruption Concerns by High School Option*			
Number	Option A	Option C	Option D
1	Berkeley	Barrington	Ashbury
2	Burgundy Parke	Canterbury	Barony Woods
3	Candlewood	Carrington	Barrington
4	Canterbury	Cedar Chase	Candlewood
5	CANTERBURY EAST	Cedar Station	Canterbury
6	Carrington	Chapelwood	Carrington
7	Cedars at Innsbrook	Charles Glen	Cedar Chase
8	Chapelwood	Chinchilla Dr-Sandston	Cedars at Innsbrook
9	Chappell Ridge	Church Run	Chapelwood
10	Chappell Ridge at Wyndham Forest	Cross Keys	Charles Glen
11	Charles Glen	Deep Run Manor	Chinchilla Dr-Sandston
12	Chinchilla Dr-Sandston	Dover Hunt	Church Run
13	Colonies	Duncroft	Colonies @ Wilde Lake
14	Cross Keys	Duntreath	Crawford Park
15	Deep Run Manor	Fairfield Green	Cross Keys
16	Dove Hollow	Forest	Deep Run Manor
17	Duncroft	Forest at Innsbrook, The	Dover Hunt
18	Duntreath	Foxhall	Duntreath
19	Fairfield Woods	Gateshead	Foxhall
20	Forest, The	Gayton Forest	Gateshead
21	Foxhall	Gayton Green	Gayton Green
22	Gateshead	Godwin	Graham Meadows
23	Gayton Forest	Graham Meadows	Granville South
24	Gayton Forest West	Green Springs	Kingsley
25	Graham Meadows	Hartley Plantation	Laurel Square
26	Grey Oaks	Kingsley	Lee Park Subdivision Sandston Avenue (Seven Pines)
27	Kingsley	Lee Park Subdivision Sandston Avenue (Seven Pines)	Magnolia Ridge
28	Laurel Square	Magnolia Ridge	Monument Heights
29	Longley Drive	Meadow Farms	Morgan Run
30	Magnolia Ridge	Meadows	Mountain Road
31	Mountain Laurel Townhomes	Morgan Run	Olde Springfield
32	Mountain Road	Oak Run	Oldhouse Run
33	Oldhouse Run	Olde Springfield	Patch Terrace
34	Pinedale Farms	Oldhouse Run	PEMBERTON WEST
35	Raintree	Pemberton	Pine Ridge
36	Rivers Edge	Pemberton West	Pinedale Farms
37	Rockstone	Pinedale Farms	Poplar Springs Rd
38	Rolfied	Pinewood Farms	Quail Walk
39	Sadler Glen	Pinewood West	Raintree
40	Sadler Green	Poplar Springs Rd	Robinwood
41	Sadler Grove	Quail Run	Rockstone
42	Skipwith Farms	Raintree	Sadler Glen
43	Springtree	Rock Spring Estates	Sadler Green
44	Sterling Forest	Rockstone	Sadler Grove
45	Stonequarter	Sedgemoor Oaks	Skipwith Farms/Milbank Road
46	Sussex	Skipwith Farms	Springcreek
47	Timbercrest	Springcreek	Springtree
48	Tuckahoe Village	Springtree	Stonegate
49	Twin Hickory	Sussex	The Woods at Fort Gilmer
50	University Heights	Timbercrest	Wellesley
51	Waterford	Tuckahoe Village	Wellington Apt.
52	Wellesley	Tuckahoe Village West	West End Manor
53	West End Manor	Waterford	Westwood
54	Westgate	West End Manor	Windsor Place
55	Westwood	Westwood	Woodman Terrace
56	Whitaker Woods	Whitaker Woods	Wyndham Forest-Chapel Ridge
57	Windsor	Windsor	
58	Wyndham	Windsor Place	
59	Wyndham Forest	Winterberry	
60		Woodberry	
61		Woodberry II	
62		Woods at Innsbrook	
63		Wyndham Forest	

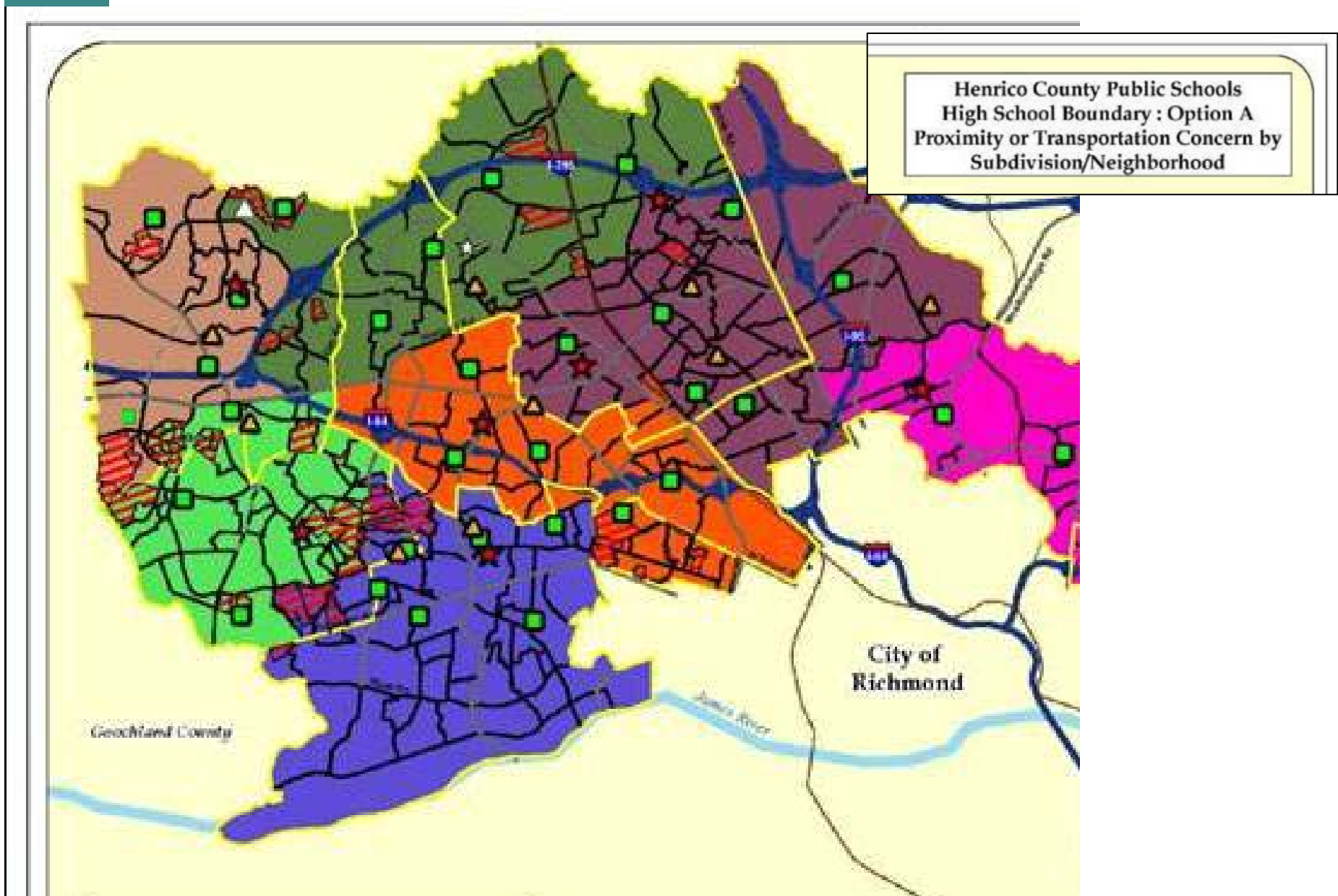


*Neighborhoods / Subdivisions  
with  
Proximity & Transportation Concerns*

# High Schools

## Pg. 34

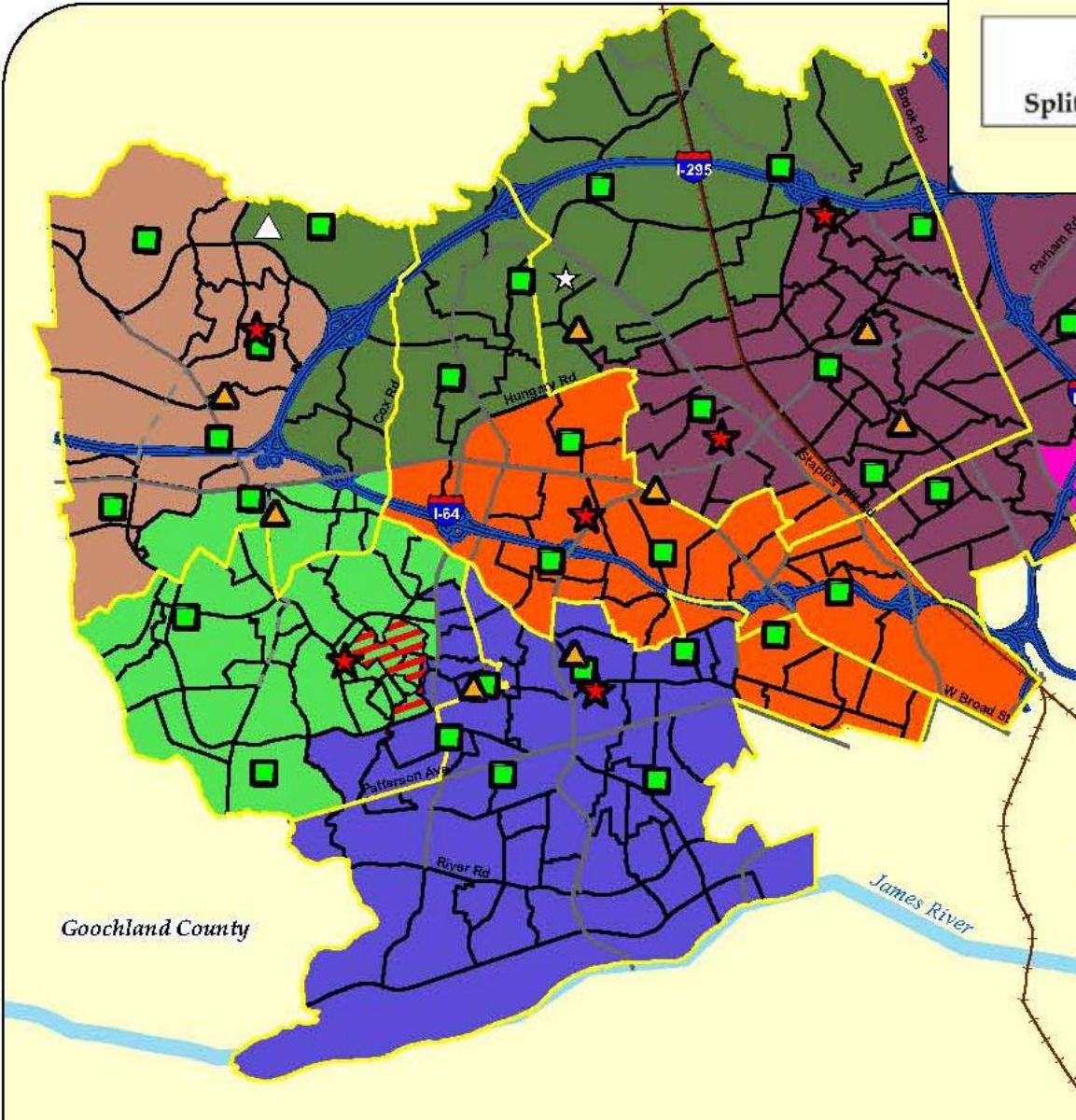
Neighborhood/Subdivisions with Proximity-Transportation Concerns by High School Option*			
Number	Option A	Option C	Option D
1	Candlewood	Barony Woods	Appling/Greenwood
2	Canterbury	Barrington	Barony Woods
3	Cedar Grove	Candlewood	Bretton Woods
4	Cedars at Innsbrook	Canterbury	Bridlewood
5	Chappell Ridge	CANTERBURY EAST	Canterbury
6	Chappell Ridge at Wyndham Forest	Carrington	Cedar Chase-Cedar Knoll Lane
7	Charles Glen	Castle Point	Cedar Grove
8	Chatsworth	Cedar Chase-Cedar Knoll Lane	Cedars at Innsbrook
9	Church Run	Charles Glen	Chapelwood
10	Colonies	Chatsworth	Charles Glen
11	Crawford Park	Church Run	Church Run
12	Crestview	Crestview/Charles Glen	Crawford Park
13	Cross Creek	Cross Keys	Crestview/Charles Glen
14	Dover Hunt	Crown Grant	Cross Keys
15	Duntreath	Dover Hunt	Dover Hunt
16	Forest Lodge Acres	Forest	Gateshead
17	Foxhall	Foxhall	Hunton Estates
18	Gateshead	Gateshead	Magnolia Ridge
19	Gayton Green	Godwin	Milhaven
20	Granville South	Hartley Plantation	Monumental Floral Gardens
21	Hunton Estates	Kingsley	Oak Run
22	Iron Wood	Lexington	Oldhouse Run
23	Kingsley	Monumental Floral Gardens	Patch Terrace
24	Lee Park Subdivision Sandston Avenue (Seven Pines)	Morgan Run	Pine Creek South
25	Milhaven	Oldhouse Run	Pinedale Farms
26	Millstone/Wyndham	Patch Terrace	Rainbrook
27	Monument Heights	Pinedale Farms	River Road Hills
28	Monumental Floral Gardens	Ponds at Dandridge Farm	Rockstone
29	Oldhouse Run	Queen's Pointe	Sadler Grove
30	Pine Ridge	Raintree	Sadler Oaks
31	Pinedale Farms	Rock Spring Estates	Springtree
32	Poplar Springs Rd	Rockstone	Sterling Forest
33	Queen's Pointe	Rolfield	Wellesley
34	Raintree	Sadler Grove	Westwood
35	Rivers Edge	Sedgemoor Oaks	Wyndham Forest
36	Rockstone	Sherbrooke	
37	Sadler Grove	Springcreek	
38	Springtree	Springtree	
39	Tall Oaks	Sterling Forest	
40	Three Chopt	Summerberry	
41	Tuckahoe Village	Tuckahoe Village	
42	Wellesley	University Heights	
43	Westwood	Wellesley	
44	WYNDHAM	Westwood	
45	Wyndham Forest	Whitaker Woods	
46		Winterberry	
47		Woodberry	



*Neighborhoods / Subdivisions  
identified in comments  
as ‘Split’ Subdivisions*

Identified Subdivision Splits in Forum Comments - High Schools			
Number	Option A	Option C	Option D
1	Raintree	Chamberlyn Estates	Chamberlyn Estates
2		Duntreath	Huntington Place (east of Chamberlyn Estates)
3		Huntington Place (east of Chamberlyn Estates)	Oaks, The
4		Oaks, The	

\* Splits were identified by community and validated in the GIS



**Henrico County Public Schools  
High School Boundary : Option A  
Split Subdivision/Neighborhood Concerns**

Subdivision splits refer to documents that identify a subdivision that was split.

New Kent County

**6:45-7:00**

*Committee discussion of report and  
other thoughts related to the community  
forum*

## Part II Agenda:

- |           |   |
|-----------|---|
| 7:00-7:15 | Review ranking table logistics and review questions   |
| 7:15-7:20 | Review suggested references and handouts for exercise   |
| 7:20-8:05 | Complete Ranking Table and give to Cropper GIS<br><b><u>5 minutes for 1<sup>st</sup> question and</u></b><br><b><u>10 minutes maximum for questions 2-5</u></b> |
| 8:05-8:10 | Tally committee's ranking of options  |
| 8:10-8:20 | Discuss ranking table results   |
| 8:20-8:30 | Choose 2 Options and review results   |

# Ranking Table Logistics

*Each committee member will rank the options based on redistricting guidelines*

Please rank each option based on how it meets the Redistricting Guidelines and other criteria for redistricting.  
Remember to focus on the entire option as a whole when ranking as opposed to one individual area.  
A rank of 1 would best meet the criteria, and a rank of 3 would least meet the criteria.

	Question 1: Does the option best balance membership across the county?	Question 2: Are zones defined by major geographic features (i.e. roads and other natural boundaries) as a whole?	Question 3: Does the option minimize the overall disruption of neighborhoods / subdivisions as a whole?	Question 4: Does the option minimize division of clearly identifiable community components (e.g. apartment units, residential subdivisions)?	Question 5: Does the option maximize walkability & transportation as a whole?
Option #					
A					
C					
D					

# Ranking Table Logistics

*Cropper GIS has provided suggested references to the committee to assist in answering the questions*

Reference Suggestions:		
Question Number:	Material:	Location:
1	Current/Projected Membership Tables	Handout 1
2	Large Scale Options Maps	Wall maps
3	Neighborhood disruption tables & maps	Community Input Session Summary, pages 19-22; Handout 2
4	Subdivision split tables & maps	Community Input Session Summary, pages 40-43
5	Proximity/Transportation tables & maps	Community Input Session Summary, pages 34-37; wall maps

## Review of Suggested References:

*For Question 1, review membership analysis along with current and projected membership tables (called **HANDOUT 1**)*

# Review of Suggested References:

## *Membership analysis*

Utilization at 2010					
High School Option	Below 85%	85-90%	91-95%	Over 95%	Total below 95%
A	2	1	1	5	4
C	1	2	2	4	5
D	2	0	4	3	6

Utilization at 2010		
High School Option	90% or Below	91% or Above
A	3	6
C	3	6
D	2	7

Utilization by 2013					
High School Option	Below 85%	85-90%	91-95%	Over 95%	Total below 95%
A	1	3	1	4	5
C	1	3	2	3	6
D	1	3	1	4	5

Utilization by 2013		
High School Option	90% or Below	91% or Above
A	4	5
C	4	5
D	4	5

# Review of Suggested References:

## *Projected membership tables (HANDOUT 1)*

### High School Redistricting Option A

				Total Students					
				2008*	2009*	2010	2011	2012	2013
<b>Deep Run</b>									
Total Membership				1890	1943	1434	1507	1591	1661
Capacity minus Membership	Capacity	1850	-40	-93	416	343	259	189	
Membership as % of Capacity				102%	105%	78%	81%	86%	90%
<b>Freeman</b>									
Total Membership				1627	1666	1695	1646	1581	1552
Capacity minus Membership	Capacity	1760	133	94	65	114	179	208	
Membership as % of Capacity				92%	95%	96%	94%	90%	88%
<b>Godwin</b>									
Total Membership				1780	1777	1949	1852	1745	1725
Capacity minus Membership	Capacity	1904	124	127	-45	52	159	179	
Membership as % of Capacity				93%	93%	102%	97%	92%	91%
<b>Henrico</b>									
Total Membership				1916	1930	1858	1826	1757	1759
Capacity minus Membership	Capacity	1828	-88	-102	-30	2	71	69	
Membership as % of Capacity				105%	106%	102%	100%	96%	96%

*For Question 2, review  
wall maps to aid in  
ranking*

## Review of Suggested References:

*For Question 3, review  
Neighborhood Disruption  
tables and maps, along  
with Handout 2*

*Neighborhood disruption tables  
and maps:*

*ES - pages 8-12*

*MS - pages 13-18*

*HS - pages 19-22*

## Handout 2 used for Question #3

### Handout Two

The following tables show the total number of projected 2010 Students that will be redistricted based on each proposed option. This data can be used to help answer Question # 3 which asks, "Does the option minimize the overall disruption of neighborhoods / subdivisions as a whole?"

ES Option	2010 Projected Number of Students Moved From Current Boundary
A	1984
B	1366
C	1744
D	896

These elementary scenarios show that Option D impacts the least amount of students (896) and Option A impacts the most (1984).

MS Option	2010 Projected Number of Students Moved From Current Boundary
A	2437
B	2564
C	2564
D	3545
E	2949

This scenario shows that Option A impacts the least amount of students (2437) and Option D impacts the most (3545).

HS Option	2010 Projected Number of Students Moved From Current Boundary
A	3933
C	4605
D	3917

This scenario shows that Option D impacts the least amount of students (3917) and Option C impacts the most (4605).

## Review of Suggested References:

*For Question 4, review  
subdivision split tables  
and maps*

*Subdivision split tables and maps:  
HS – pages 40-43*

*For Question 5, review  
proximity &  
transportation concern  
tables and maps, along  
with wall maps*

*Transportation/Proximity tables  
and maps:*

*ES - pages 23-27*

*MS - pages 28-33*

*HS - pages 34-37*

## Review of Suggested References:

**8:05-8:10**

***Tally Committee's Ranking  
Tables***

**8:10-8:20**

***Discuss Findings***

# Review of Suggested References:

**8:20-8:30**

***Committee choose 2 options***

***&***

***Discuss Results***